



Conway 58ft Semi Traditional Reverse Layout, Beta engine

£55,000

A lovely 58ft Semi Traditional built by J.D Narrowboats & fitted out by the owner in 2012. A reverse layout offers 2+2 berths and currently used as a liveboard and equipped accordingly. The boat comes with a comprehensive inventory.

Layout: Stern, galley, saloon, bathroom, bedroom, doors to foredeck.

Galley: Ultiima Hotpoint gas cooker, Currys full size 240v fridge freezer, Beko washing machine, White Knight tumble dryer, drop leaf breakfast bar, breakfast bar stools, pullout slimline larder unit, wine rack, microwave, sink & drainer, work surfaces, cupboards, drawers, shelves, blinds.

Saloon: Sofa bed, Morso stove, fire implements, fire guard, log basket, sticks basket, TV/DVD with Snipe self seeking satellite system (Dual Freesat works with Sky system), shelves cupboards, blinds, free standing fold up table, side hatch, 2 radiators. blinds.

Bathroom: Walk through bathroom, shower enclosure, wash basin & vanity unit, pump out toilet converted from cassette with 400 litres holding tank, mirror, heated towel rail.

Bedroom: Spacious bedroom with a fixed double bed, TV/DVD with Freeview box, office chair & table, cupboards, storage, drawer unit, carpet, blinds, radiator, doors to foredeck.

Specification: Conway

Steel specifications: 10mm / 6mm / 5mm / 4mm

Dimensions: Length 58' / Beam 6'10" / Draft 2'3"

Hull Builder: J.D Narrowboats

Fit-out: Owner

Engine: Beta 43 Keel cooled

GearBox: PRM 150

Hours: 2404

Batteries: 1 x Starter, 5 (130amph) domestic

Water Tank: 600 litres

Diesel Tank: 180 litres

Heating: Eberspacher central heating with automatic frost setting, Morso Squirrel stove

Water Heating: Eberspacher, calorifier off engine, immersion heater

Electrics: 12v, 240v Victron 3kw inverter, ITC EU generator GG3000si, galvanic isolator, 4 x 100w solar panels, 1 x 100w solar panel, 100w wind turbine, 25 metre shoreline, electric 12v free standing sump pump

Blacking: 22nd March 2016

Anodes: 22nd March 2016

Engine Service: 28th March 2016

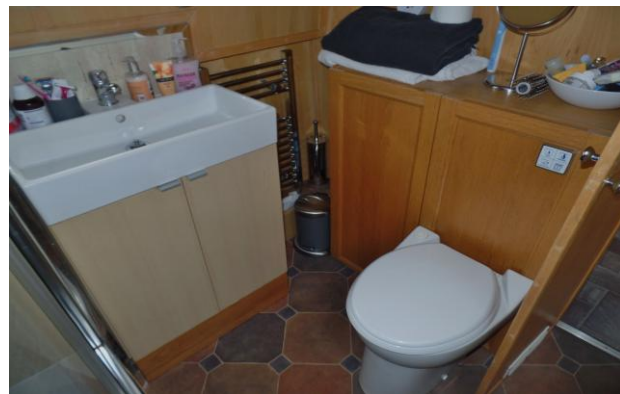
Boat Safety Certificate: Expires April 2020

Insulation: Spray foam

Survey: Last out of water survey, 1st August 2014

Additional:

VHF Cobra MR HH125 marine radio, Cratch cover, pram cover, roof top storage box, Kart tyre fenders, 30 litre diesel container, anchor c/w 10 metres 14mm, fire blanket, chain & 30 metres rope, 25 metre food grade water hose, standard water hose, Anchor clock, 2 x 2 metres mooring chains, Moonracker DTV 1000 back up digital tv aerial. 2 x 13kg gas bottles, fire blankets, 2 x Seapro buoyancy aids, lifebuoy, boat pole, 2 x boat hooks, boarding plank, fenders, mooring stakes, hammer, 5 windlasses, shoreline, nav lights,



£55,000

No guarantee is given or implied with regards to specifications but descriptions are given in good faith. All vessels are sold without a warranty or condition as to the fitness either expressed or implied by status or otherwise. We are relying on information supplied to us from a third party. Swanley Brokerage advises that a qualified independent surveyor carries out a full out of water survey.