



Bernicia

30ft Cruiser Stern

2 berth, Reverse Layout

£18,500



Bernicia is a 30ft Cruiser Stern built by Liverpool Boats & fitted out by Bridgewater Boats in 1991. Reverse layout, Vetus engine.

Layout: Stern, galley, shower closet, toilet closet, wash basin & vanity unit, saloon, doors to foredeck.

Galley: Vanette cooker, shoreline 12v fridge, instantaneous water heater, sink & drainer, cupboards, table, curtains.

Shower Closet: Shower.

Toilet Closet: Porti Potti

Wash Basin; Wash basin, cupboards.

Saloon: 2 chairs converting to single berths, stove, carpet, curtains, doors to foredeck.



Specifications: Bernicia

Dimensions:

Length 30' / Beam 6'10"

Hull Builder: Liverpool Boats

Fit-out: Bridgewater Boats

Engine: Vetus 2 cylinder

Batteries: 1 Starter, 2 domestic

Water Tank: Not stated

Diesel Tank: Not stated

Heating: Stove

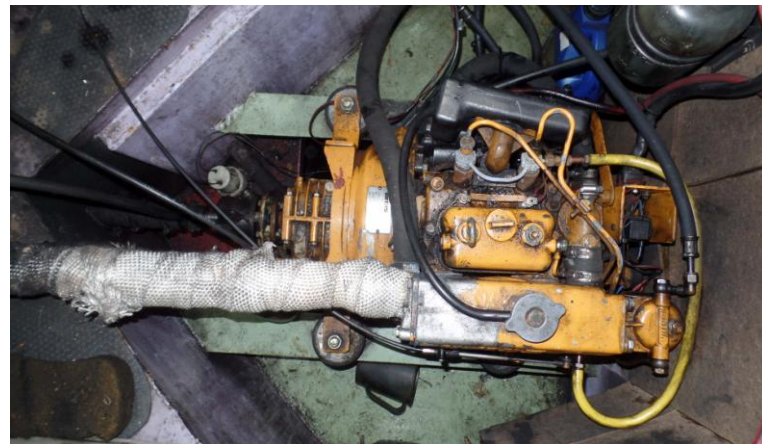
Water Heating: Instantaneous gas heater

Electrics:

12v-240v, 1000w Sterling Pro Power Quasi Sign wave inverter

Boat Safety Certificate:

12th October 2019



£18,500