



Rambling Rose

57ft Traditional

£59,000

Description

Rambling Rose is a 57ft Traditional narrowboat built in 2010 by Jonathon Wilson & fitted out by Coates & Company. She offers a reverse layout with 2+2 berths. Beta 38hp engine.

Layout: Stern, Galley, Dinette, Saloon: Bathroom, Bedroom, Doors to foredeck.

Galley: Candy Aquamatic 3.5kg washing machine, Spinflo Caprice MK111 cooker, 12v fridge, kettle, cupboards, drawers, sink & drainer, work surfaces.

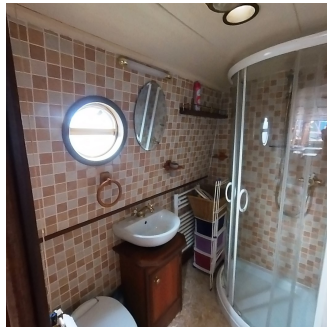
Dinette: Pullman dinette converting to a double berth, side hatch, radiator, carpet, rug, shelves.

Saloon: 12v smart tv, Sony Micro hifi/cd player, DAB radio, 2 chairs, footstool, Evergreen Larch stove, curtains, carpet, rug, shelves.

Bathroom: Spacious bathroom with Thetford cassette toilet, shower enclosure, sink, cupboard, radiator, carpet, curtains, doors to foredeck.

Bedroom: Double bed that converts to a single or seating, double wardrobe, shelves, cupboards, radiator, carpet, curtains, doors to foredeck.





Specifications

Model: 57ft Traditional

Boat Build Date: 2010

Steel Specifications: 10mm/6mm/4mm/4mm

Length: 57ft

Beam: 6ft 10 inches

Draft: 2ft 3 inches

Builder: Jonathon Wilson

Fit Out: Coates & Company

Berths: 2+2

Toilet: Thetford cassette

Engine: Beta

Engine HP: 38

Engine Hours: 3001

Gear Box: Not Stated

Last Engine Service: 11th October 2023

Bowthruster: No

Batteries: 1 Starter, 4 Domestics (Domestics replaced December 2023)

Diesel Tank Capacity: 227 litres

Water Tank Capacity: 454 litres

Waste Tank Capacity: Not Applicable

Heating: Eberspacher, Evergreen ST0311A multi fuel stove

Water Heating: Calorifier off the engine, immersion

Electrics: 12v/240v, Victron 3kw inverter/charger, 2 solar panels, MPPT solar panel controller, galvanic isolator

Blacking: November 2022

Anodes: 26th May 2021

Boat Safety Certificate: 11th September 2026

Insulation: Sprayfoam

Headroom: 6ft 6 inches (Measurements are approximate)

Additional Information: Cratch cover, fire blanket, internal LED lighting, boat pole, boat hook, boarding plank, fenders, mooring stakes, hammer

shoreline, LED navigation lights.