



# Jester 42ft Cruiser Stern £49,995

## Description

Jester is a lovely 42ft Cruiser Stern built by Liverpool Boats in 1998 and fitted out by her owner. She is a very light and airy narrowboat with a lovely ambience and would be suitable as a small liveaboard. There are 2+2 berths with a double bed, pram hood and cratch cover. Beta 32hp engine.

**Layout: Stern, Bedroom, Bathroom, Galley, Saloon, Doors to foredeck.**

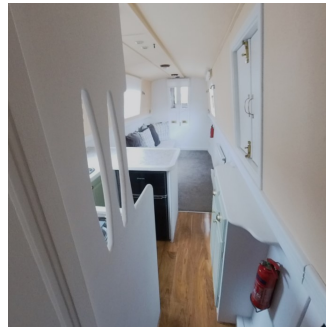
**Bedroom:** Double bed with storage underneath, cupboards, radiator.

**Bathroom:** Thetford cassette toilet, shower enclosure, towel radiator, wash basin & vanity unit.

**Galley:** New Thetford Duplex oven & grill, new Thetford hob, Russell Hobbs 240v fridge, Indesit washer/dryer, sink & drainer, work surfaces, cupboards, drawers, side hatch.

**Saloon:** Radiator, carpet, blinds, doors to foredeck.





## Specifications

**Model:** 42ft Cruiser Stern

**Boat Build Date:** 1998

**Steel Specifications:** 8m/6mm/4mm/4mm

**Length:** 42ft

**Beam:** 6ft 10 inches

**Draft:** 2ft 6 inches

**Builder:** Liverpool Boats

**Fit Out:** Owner

**Berths:** 2+2

**Toilet:** Thetford cassette

**Engine:** Beta

**Engine HP:** 32

**Engine Hours:** Not Stated

**Gear Box:** New 2019

**Last Engine Service:** January 2023

**Bowthruster:** No

**Batteries:** 1 Starter, 4 Domestic

**Diesel Tank Capacity:** 200 litres

**Water Tank Capacity:** 680 litres

**Waste Tank Capacity:** Not Applicable

**Heating:** Central heating

**Water Heating:** Central heating, immersion, calorifier off the engine

**Electrics:** 12v/240v, 3000w inverter, galvanic isolator

**Blacking:** 2018

**Anodes:** 2018

**Boat Safety Certificate:** 27th August 2027

**Insulation:** Not Stated

**Headroom:** Bedroom: 6ft 4inches, Corridor: 6ft 3 inches(Width: 1ft 8 inches, Bathroom: 6ft 5 inches, Galley: 6ft 5 inches, Saloon: 6ft 6 inches (All measurements are approximate)

**Additional Information:** Fire blanket, boat pole, boat hook, fenders, mooring stakes, hammer, windlass, shoreline