



# Hallmark 57ft Semi Traditional £68,000

## Description

Hallmark is a lovely 57ft Semi Traditional narrowboat built in 2005 Liverpool Boats with an owner fit out. She has 2+4 berths in a reverse layout. Professionally repainted & windows replaced August 2023. LED lighting. April 2022 internal woodwork professionally refurbished. Isuzu 35 engine.

**Layout:** Stern, Galley, Dinette, Saloon, Bathroom, Bedroom, Doors to foredeck.

**Galley:** Country Leisure Midi Prima oven & grill, Country Leisure 9 Series hob, Shoreline 12v fridge, Cookworks microwave, cupboards, drawers, sink, drainer, blinds, Panasonic radio/cd player.

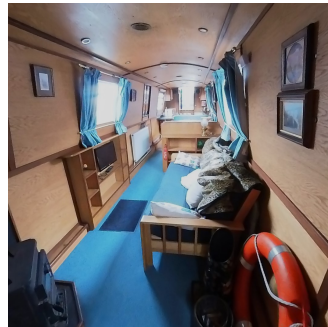
**Dinette:** Pullman dinette with storage underneath, side hatch, carpet, curtains, radiator.

**Saloon:** Vienna sofa bed, Finlux tv, Morso Squirrel stove, carpet, shelves, curtains, radiator.

**Bathroom:** Shower cubicle, Thetford cassette with 2 spare cassettes, wash basin & vanity unit, shelves, mirror, blinds.

**Bedroom:** Double bed extends to kingsize with drawers, shelves, wardrobe, cupboards, mirror, radiator, carpet, curtains.





## Specifications

**Model:** 57ft Semi Traditional

**Boat Build Date:** 2005

**Steel Specifications:** 10m/6mm/5mm/4mm

**Length:** 57ft

**Beam:** 6ft 10 inches

**Draft:** Not Stated

**Builder:** Liverpool Boats

**Fit Out:** Liverpool Boats

**Berths:** 2+4

**Toilet:** Thetford cassette

**Engine:** Isuzu

**Engine HP:** 35

**Engine Hours:** Not Stated

**Gear Box:** Newage PRM 150

**Last Engine Service:** February 2024

**Bowthruster:** No

**Batteries:** 1 Starter, 2 Domestics

**Diesel Tank Capacity:** 180 Litres

**Water Tank Capacity:** 400 litres (Stainless Steel)

**Waste Tank Capacity:** Not Applicable

**Heating:** Webasto to 3 radiators, (Central heating boiler pump new May 2022) Morso Squirrel stove

**Water Heating:** Webasto, engine off calorifier (New 2019)

**Electrics:** 12v/240v, Sterling 1600w Pure Sine Wave inverter (New 2019), Sterling ProCharge D battery charger, galvanic isolator

**Blacking:** August 2023

**Anodes:** Checked August 2023

**Boat Safety Certificate:** 4th October 2026

**Insulation:** Sprayfoam

**Headroom:** Galley: 6ft 5 inches, Dinette: 6ft 3 inches, Saloon: 6ft 5 inches, Corridor: 5ft 8 inches (Width: 1ft 10 inches) Bathroom: 6ft 4 inches, Bed: 6ft 4 inches

**Additional Information:** Pram hood (New 2022) new deck boards August 2023, new front & rear fenders August 2023