



Anaconda

70ft Traditional Stern

£95,000

Description

Anaconda is a truly exceptional craft not least with her being all electric 24v.

Anaconda is a bespoke built 70ft Traditional narrowboat with a Boatman's cabin. She was built to the owner's design and she was featured in Canal Boat magazine.

Alexander Boats built Anaconda and Fernwood Craft and Design fitted her out in 2010. Anaconda was launched in 2011. The beta 50 hp engine is situated in the offset engine room along with the batteries, Cummins generator and the electric controls.

Flooring is reclaimed pine, hull sides below gunwhale are painted wooden tongue & groove and the hull sides above gunwhale are painted wooden panels.

Layout: Stern, Boatman's Cabin, Toilet closet, Engine Room, Bedroom, Bathroom, Sitting Room/Dining Room, Galley, Saloon, Doors to foredeck.

Boatman's Cabin: Traditional Boatsman's drop down bed, stove, bench seating, cupboards, drawers, Lilley & Gilley list gauge, radiator.

Toilet Closet: Pump out toilet, wash basin, shelves.

Engine Room: Beta Marine 50hp engine in a cocoon, Cummings Onan generator, battery bank, Victron Multiplus Compact 2000 24v inverter/charger, cupboard, side hatch in corridor.

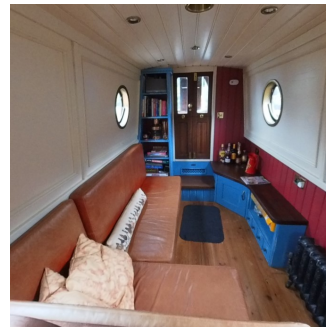
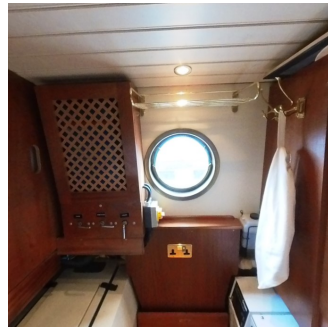
Bedroom: Double extendable bed with drawers underneath, wardrobe, shelves, radiator.

Bathroom: Large shower cubicle with acrylic shower tray, pump out toilet, wash basin, drawers, shelves, mirror.

Sitting Room/Dining Room: L shaped seating converting to a double berth, Samsung LED tv, Shoreline chest freezer under seating, dining table, clock, barometer, shelves, cupboards, drawers, side hatch.

Galley: CDA 240v integrated fridge, CDA washing machine, CDA dish washer, oven & grill, ceramic hob, Morphy Richards microwave, pull out cupboard with further storage behind, built in CDA wine cooler, porcelain sink, CDA Iroko work surfaces, side hatch, shelves, cupboards.

Saloon: L shaped seating converting to a double berth with drawers underneath, shelves, drawer, cupboards, radiator, doors to foredeck.



Specifications

Model: 70ft Traditional Stern

Boat Build Date:

Steel Specifications: 10m/6mm/4m/4mm

Length: 70ft

Beam: 6ft 10 inches

Draft: 2ft 3 inches

Builder: Alexander Boats

Fit Out: Fernwood Craft & Design

Berths: 8

Toilet: Pump out x 2

Engine: Beta (Housed in an acoustic cocoon)

Engine HP: 50

Engine Hours: 1390

Gear Box: Hydraulic drive

Last Engine Service: March 2023

Bowthruster: Lewmar 6hp hydraulic

Batteries: 2 Starter, 6 Domestics (New 28th June 2022)

Diesel Tank Capacity: 270 litres

Water Tank Capacity: 610 litres

Waste Tank Capacity: 180 litres

Heating: Eberspacher central heating

Water Heating: Eberspacher, immersion, calorifier of the engine

Electrics: 24v throughout, Cummins Onan 7kw generator with autostart mechanism, (303 hours) , galvanic isolator, Victron Multiplus Compact 2000 inverter 24v

Blacking: March 2021 (2 coats of Ballistic Black

Anodes: March 2021

Boat Safety Certificate: 3rd April 2027

Insulation: Sprayfoam

Headroom: Boatman's Cabin: 5ft 3 inches - 6ft 2 inches, Corridor: 6ft (Width 1ft 4 inches) Toilet Closet: 6ft 2 inches, Engine Room: 5ft 8 inches, Corridor 2: 6ft (Width: 1ft 9 inches) Bedroom: 6ft, Bathroom: 6ft 2 inches, Dining Room, Sitting Room: 5ft 11 inches, Galley: 6ft 2 inches, Saloon: 6ft 2 inches.

Additional Information: Traditional brass tunnel light, self seeking satellite dish & box (Unused for 2 years, may need service as self seeking not working) 2 x Humax freesat recorders, Sony CD/DVD player, waste tank gauges are faulty, mosquito net frames, fire blanket, anchor, navigation lights, boat poles, boat hooks, fenders, mooring stakes, hammer, windlass, shoreline leads.